

MONTHLY MEMBERSHIP PROGRESS REPORT

District 42

Results as of: 3/31/2024

GMT:

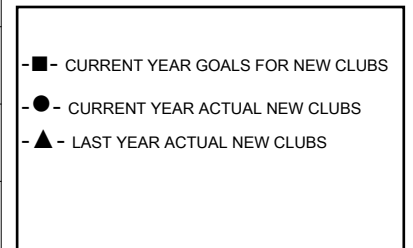
LOCATION RHODE ISLAND

GMT CA

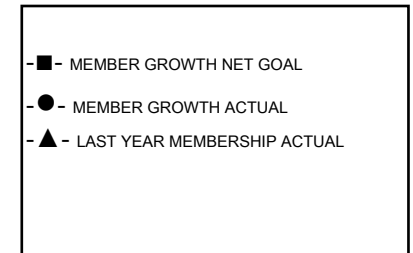
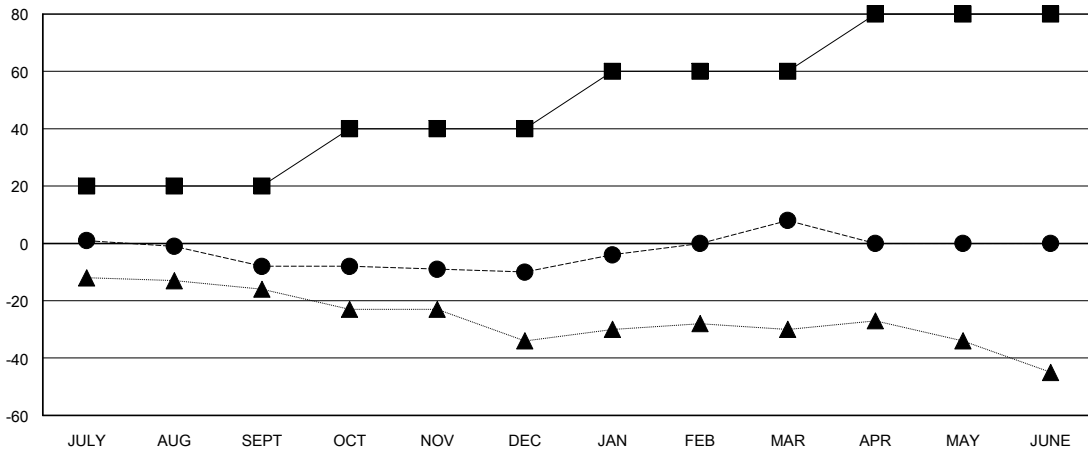
Clubs			
RESULTS FOR 2023-2024			
QUARTER	NEW CLUB GOAL	NEW CLUBS	DROPPED CLUBS
JULY/AUG/SEPT	0	0	0
OCT/NOV/DEC	1	0	0
JAN/FEB/MAR	0	0	0
APR/MAY/JUNE	0	0	0

Members			
RESULTS FOR 2023-2024			
QUARTER	MEMBER GROWTH NET GOAL	MEMBER GROWTH ACTUAL	DROPPED MEMBERS ACTUAL (including transfers)
JULY/AUG/SEPT	20	16	24
OCT/NOV/DEC	20	11	12
JAN/FEB/MAR	20	23	5
APR/MAY/JUNE	20	0	0

GOALS AND ACTUAL NEW CLUBS CUMULATIVE



GOALS AND ACTUAL MEMBERS CUMULATIVE



DROPPED CLUBS: 0	13 CLUBS OF 25 ADDED 1 OR MORE NEW MEMBERS	GENDER DISTRIBUTION MALE 660 (67.83%) FEMALE 313 (32.17%)
DROPPED MEMBERS DECEASED 7 CLUB CANCELLED 0 OTHER 34 TOTAL 41	CLICK HERE FOR CUMULATIVE MEMBERSHIP DATA	TOTAL FAMILY UNIT MEMBERS 165 FAMILY MEMBERS PAYING HALF DUES 85